

KAUFMAN and BROAD

VOISINS de BRETONNEUX

# JOLIPRE

MS Buxiet

Etiquette: Entreprise GALLET-DELAGÉ.

17 Rue du 14 juillet

Memlin Bicêtre

94

## RESEAUX

## PLAN

- EAU POTABLE
- TELEPHONE
- ECLAIRAGE PUBLIC
- BASSE TENSION
- GAZ.

Indice: mod. Réseau

Echelle 1/2000

Date OCTOBRE 1971

PLAN n° 9/13-

31

30

29

28

27

39

38

37

36

35

34

33

32

3

5

44

43

42

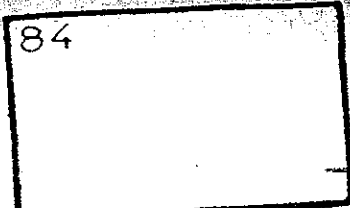
41

40

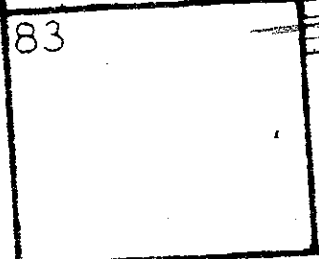
77

S

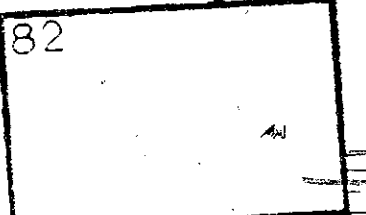
C



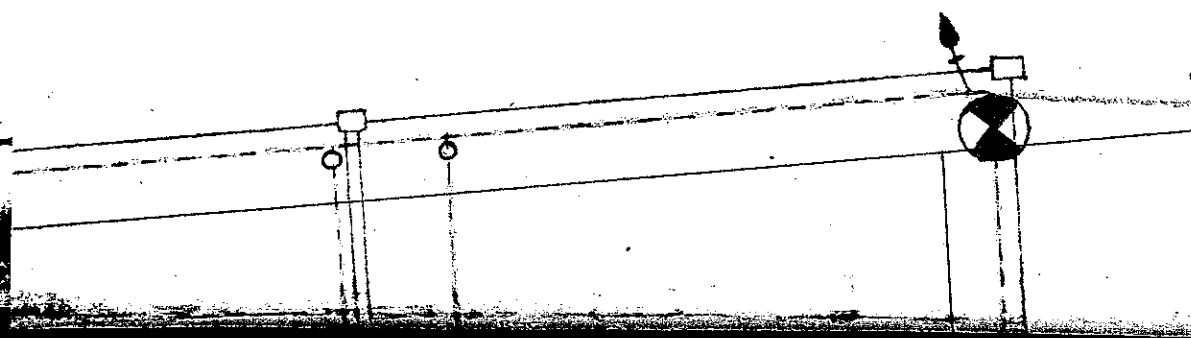
B.T.  
Boite de  
dérivation

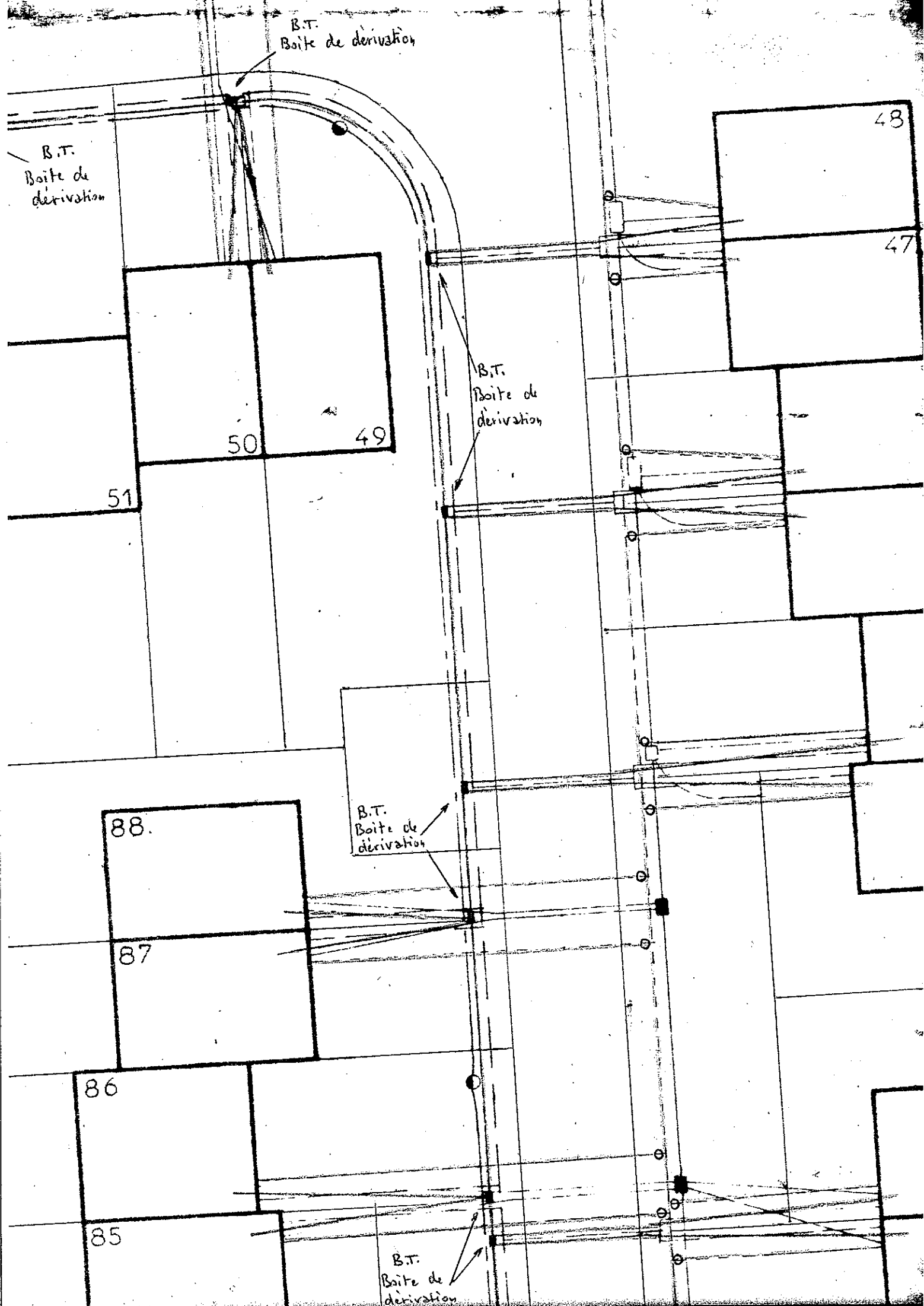


B.T.  
Boite de  
dérivation



Ventouse:





B.T.  
Boite de derivation

B.T.  
Boite de derivation

B.T.  
Boite de derivation

B.T.  
Boite de derivation

B.T.  
Boite de derivation

48

47

50

49

51

88.

87

86

85

VOIE N°

84

B.T.  
Boite de  
dérivation

83

82

B.T.  
Boite de  
dérivation

81

B.T.  
Boite de  
dérivation

78

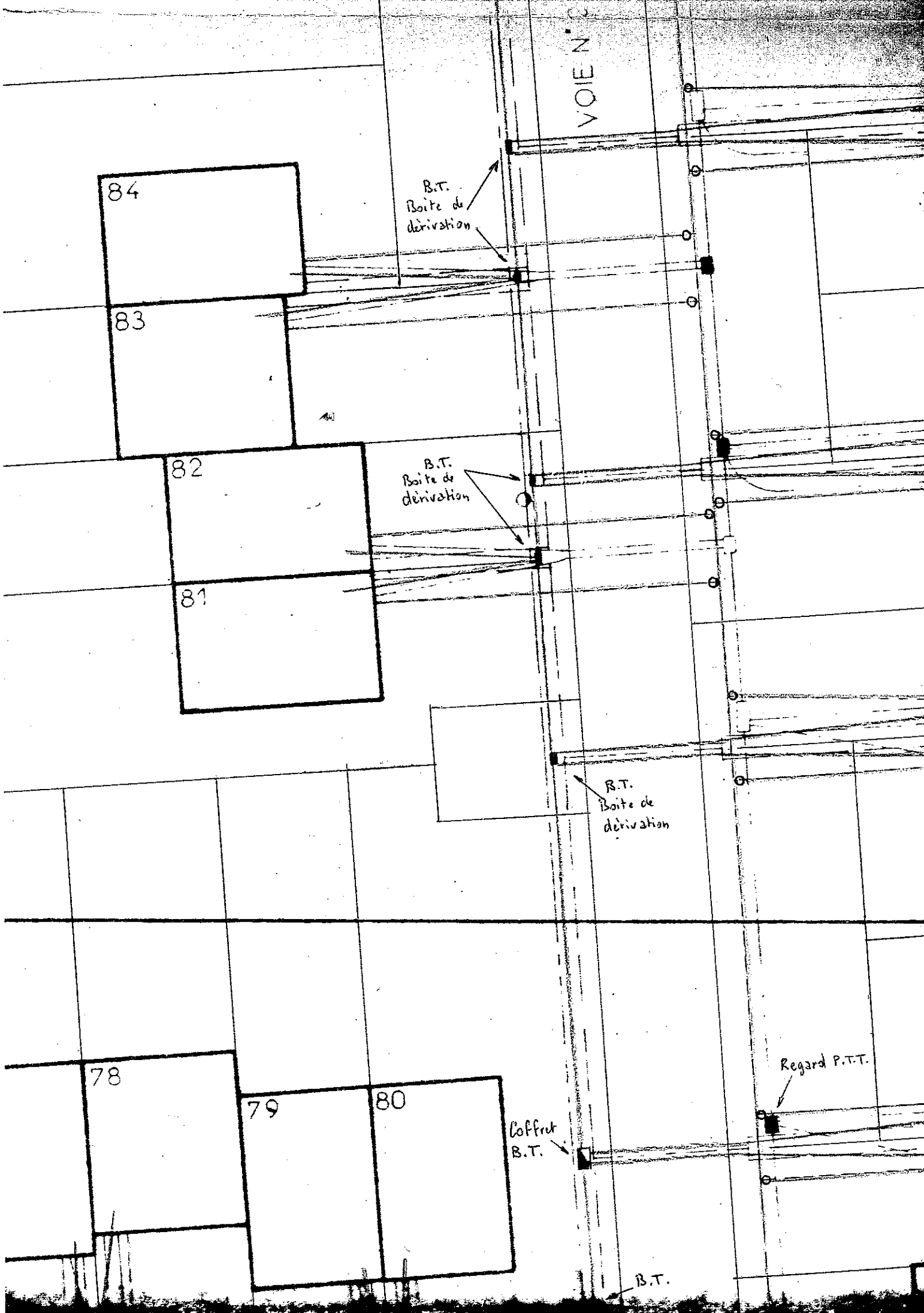
79

80

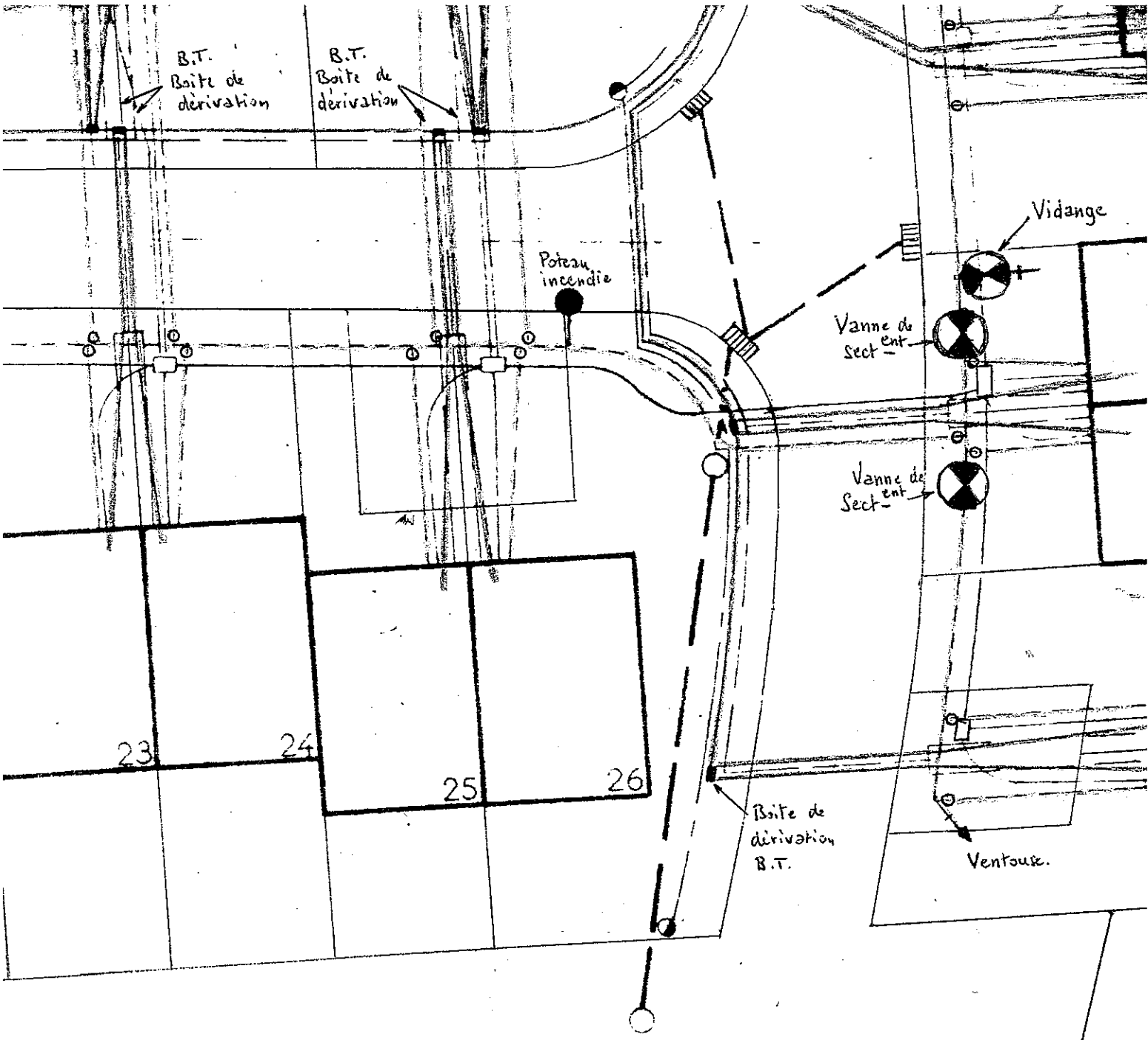
Coffret  
B.T.

Regard P.T.T.

B.T.







B.T.  
Boite de dérivation

B.T.  
Boite de dérivation

Poteau  
incendie

Vidange

Vanne de  
Sect-

Vanne de  
Sect-

23

24

25

26

Boite de  
dérivation  
B.T.

Ventouse.

Eaux pluviales

LEGENDE.

Eau potable

Vanne eau potable

Vidange




Poteau d'incendie

Ventouse

Téléphone



A2  A2 sous parking

1/2 A2  1/2 A2 sous parking

Eclairage public



Candélabre

B.T



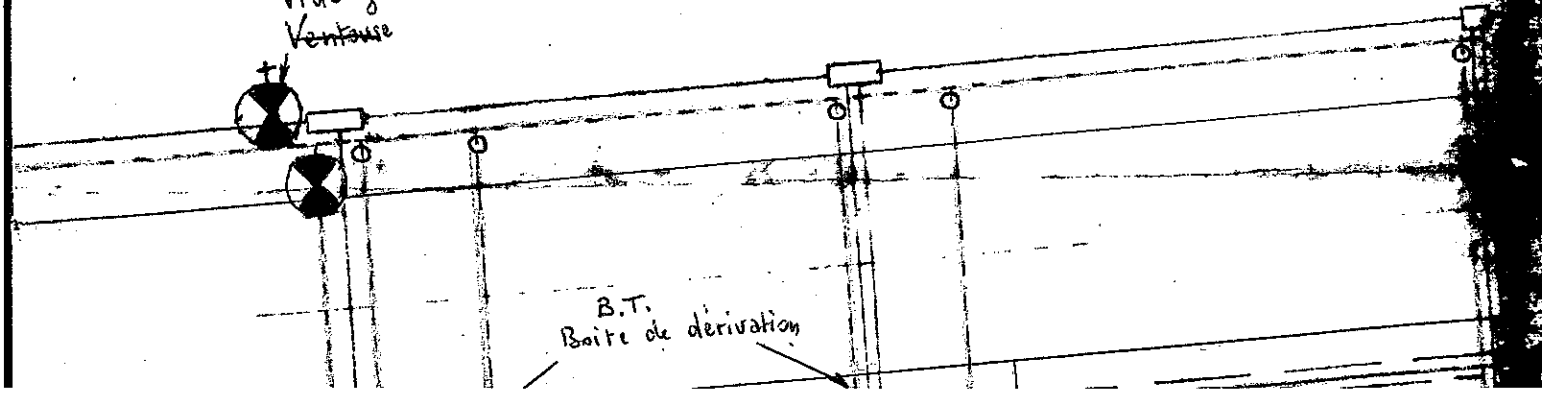
Coffret



Boîte de dérivation

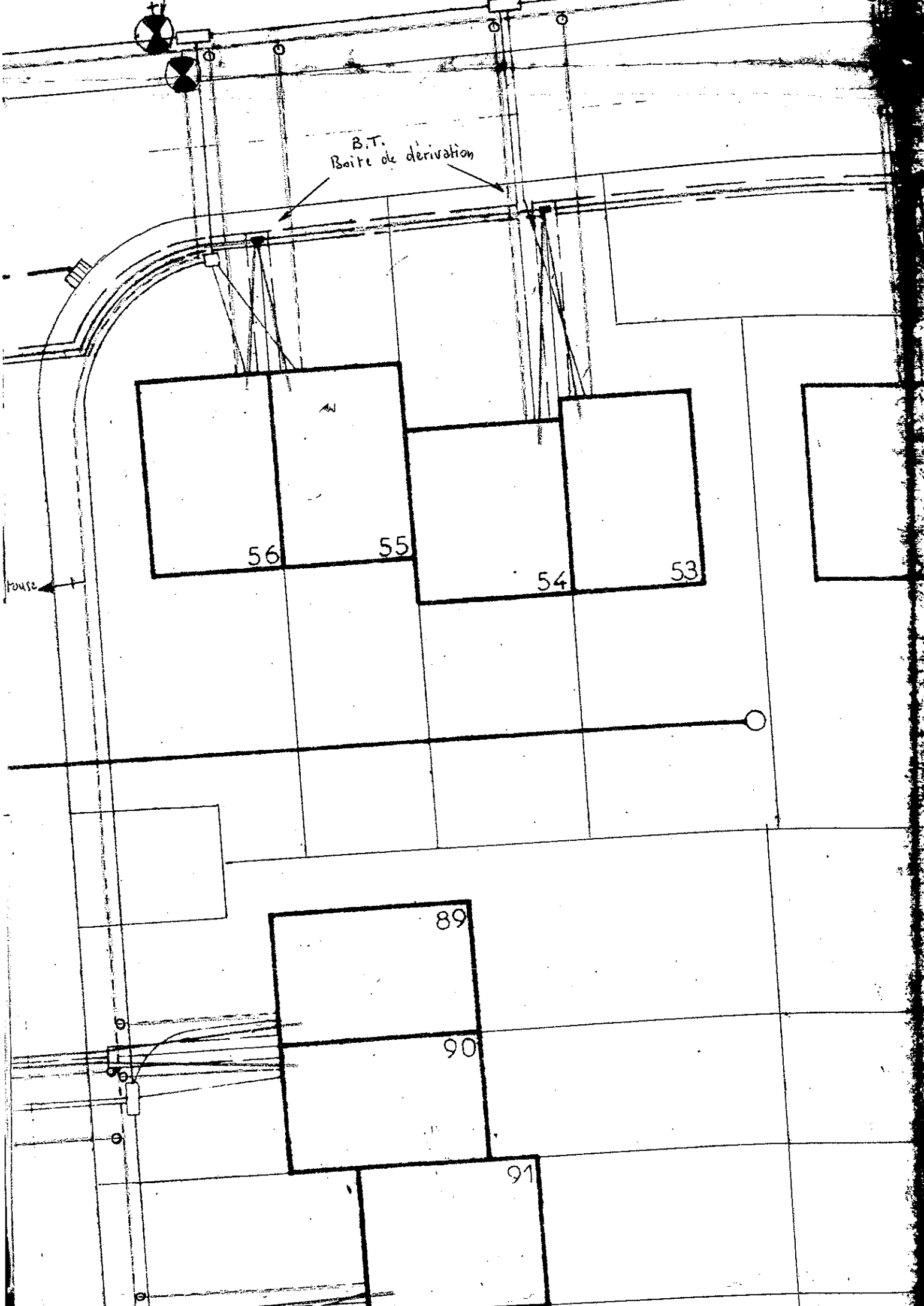
B.37

Vidange  
Ventouse



B.T.  
Boite de dérivation

B.T.  
Boite de dérivation



56

55

54

53

rouse

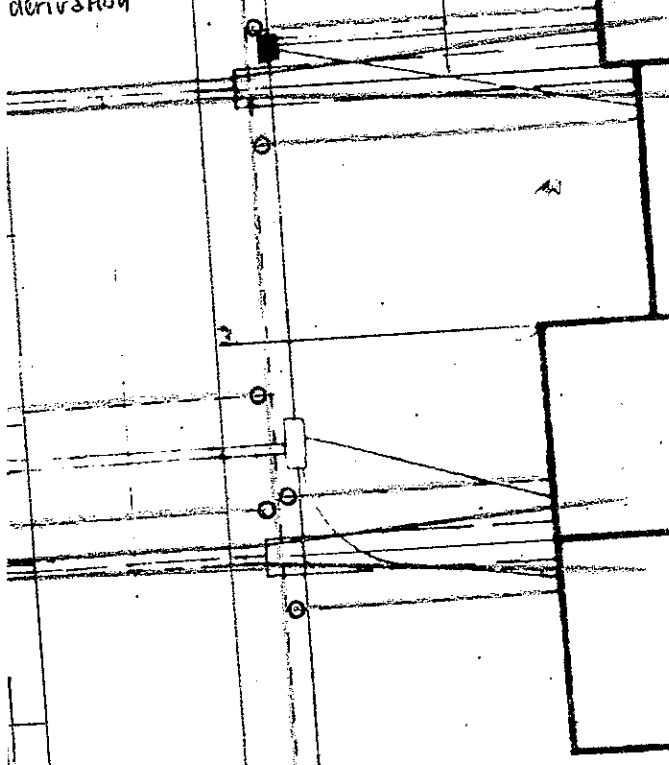
89

90

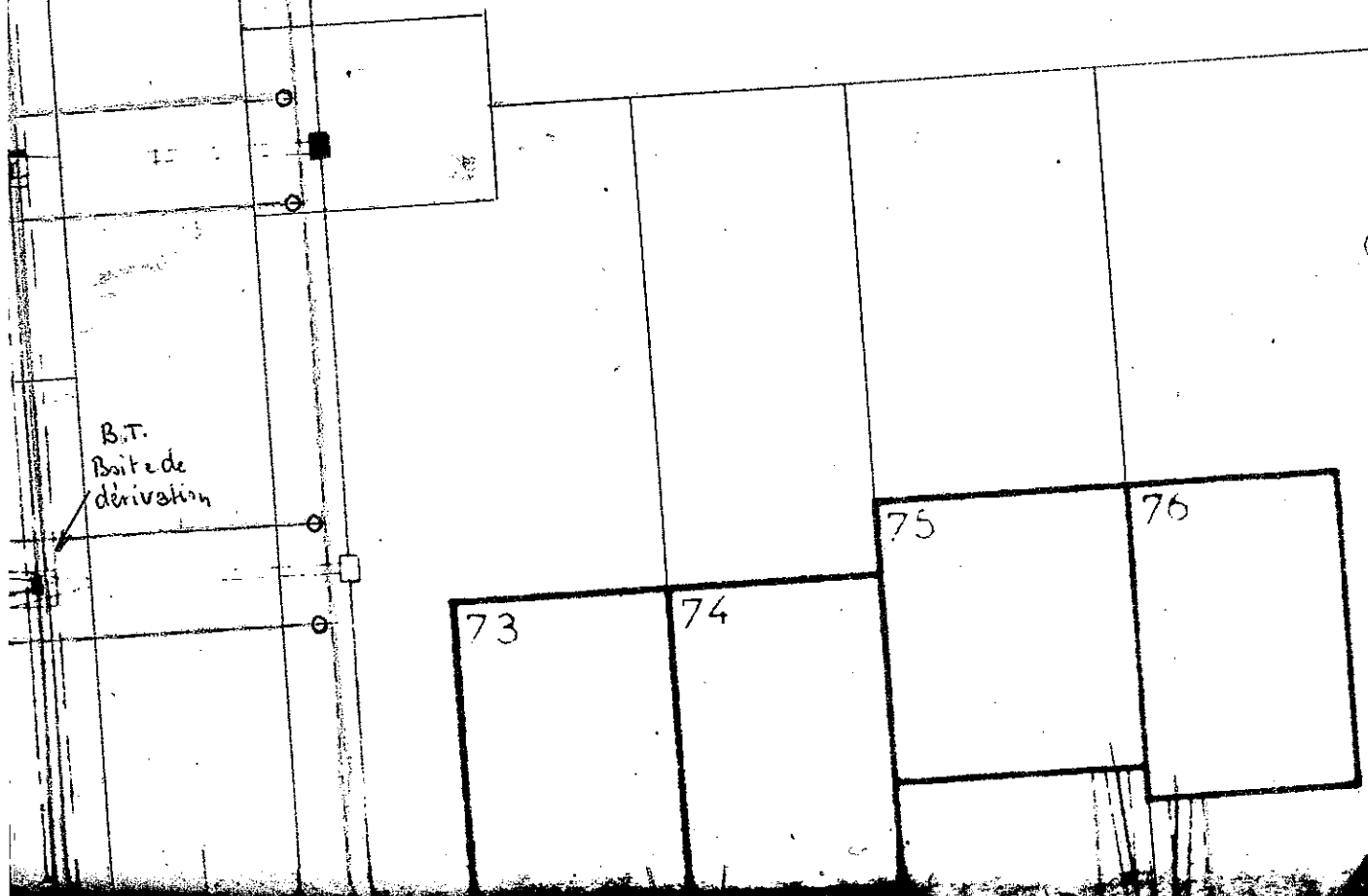
91

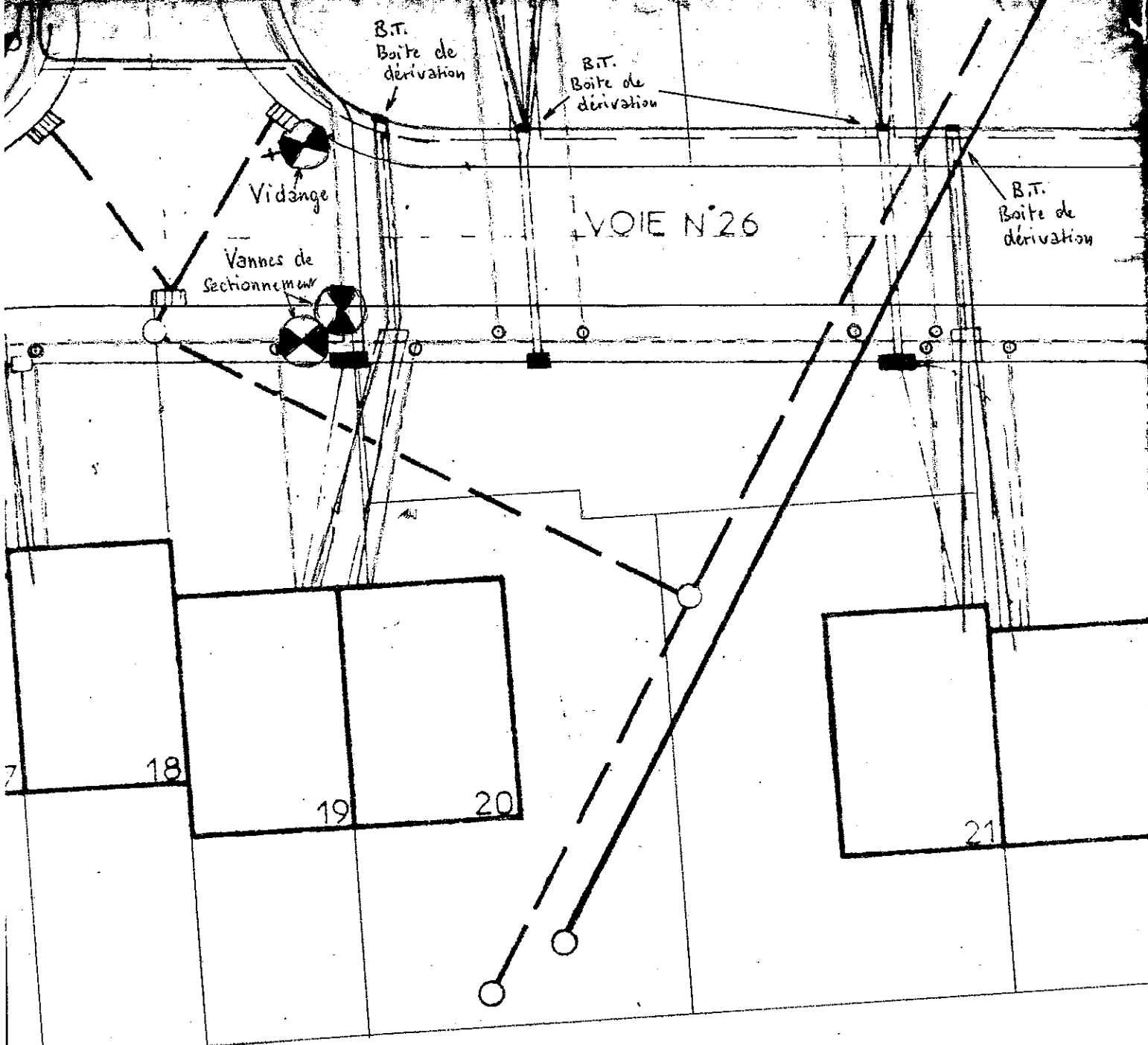
VOIE N° 27

B.T.  
Boite de  
dérivation



B.T.  
Boite de  
dérivation



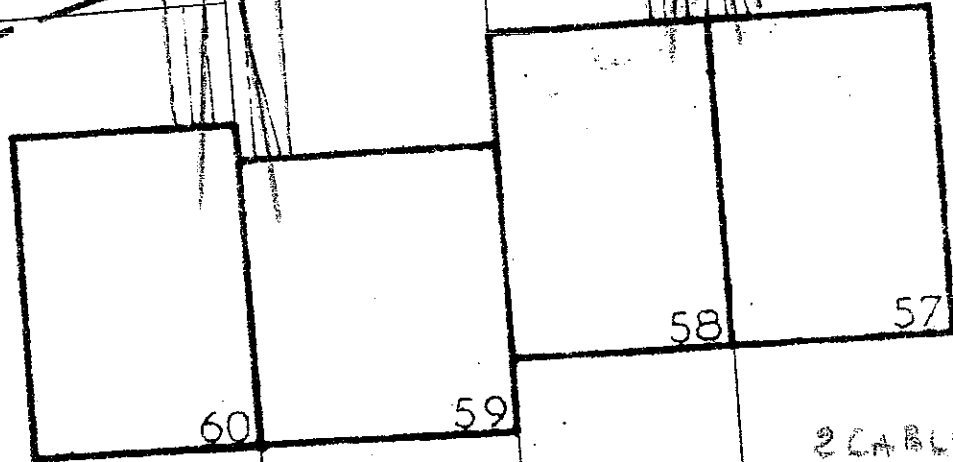




A2 EXISTANT

VOIE N°24

CABLES B.T.

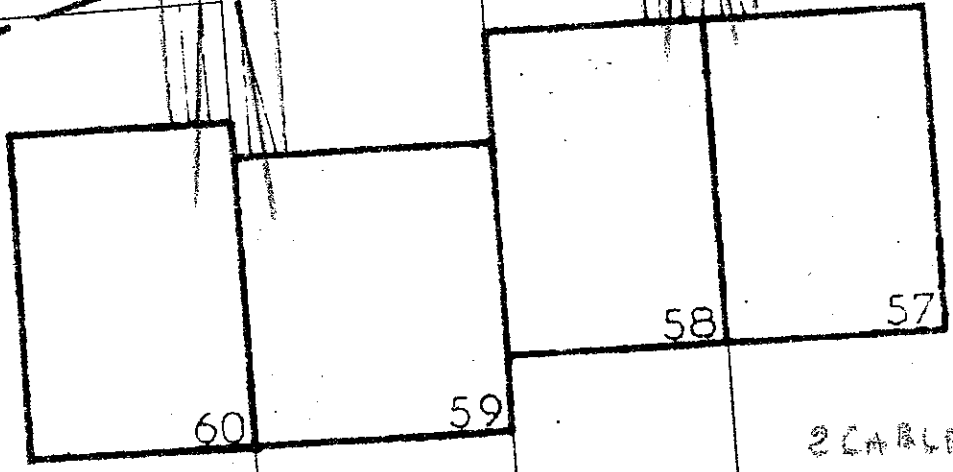


2 CABLES  
B.T. →

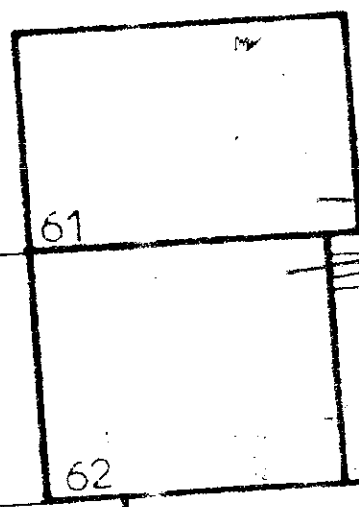
A 2 existant

VOIE N°24

CABLES B.T.



2 CABLES  
B.T. →



B.T.  
Boite de  
derivation

B.T.  
Boite de  
derivation

63





64

65

66

68

8

69

70

71

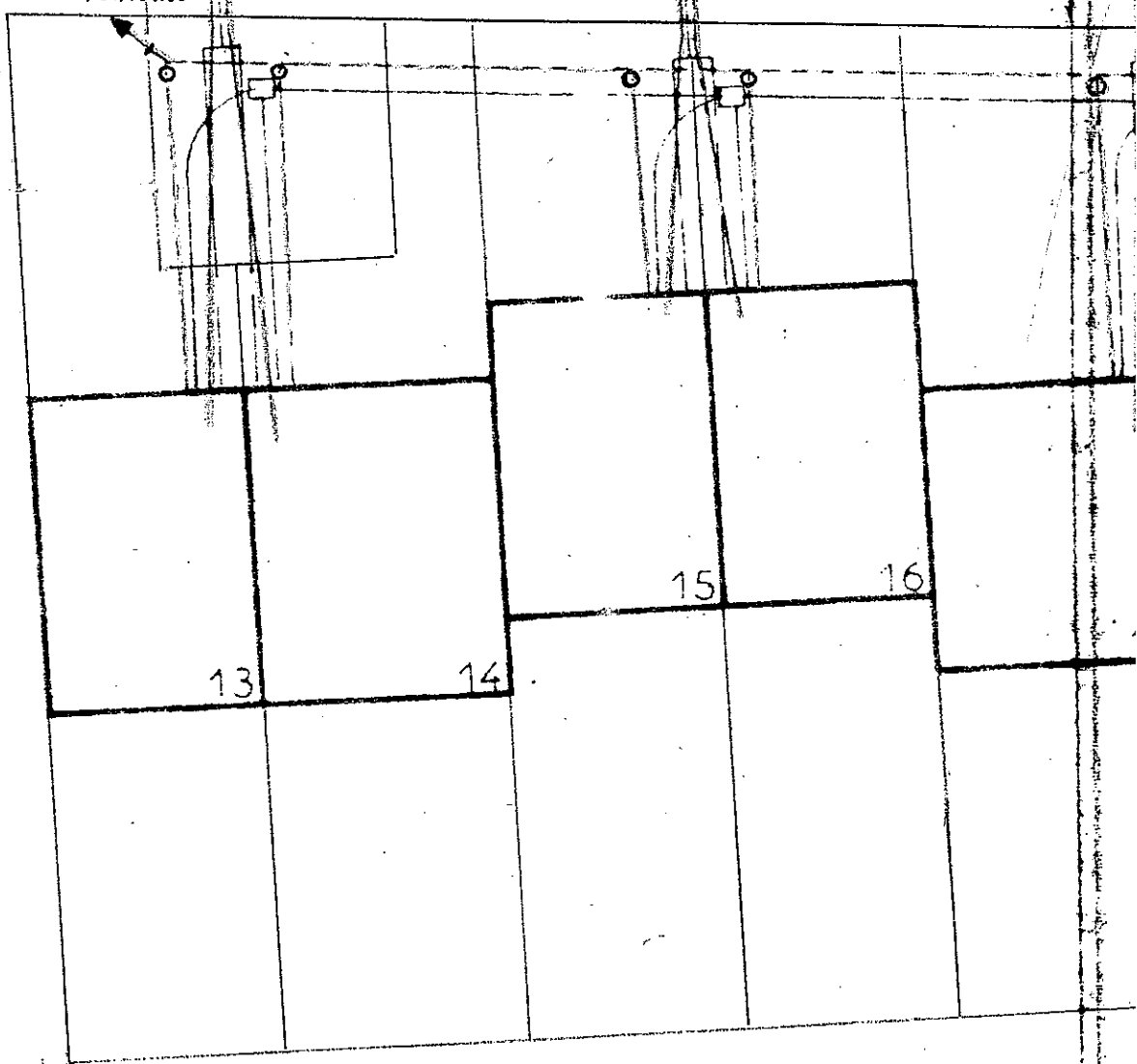
72

B.T.  
Boite de  
dérivation

B.T.  
Boite de dérivation

Coffret  
B.T.

Ventouse



B.T.  
Boite de dérivation

Coffret  
B.T.

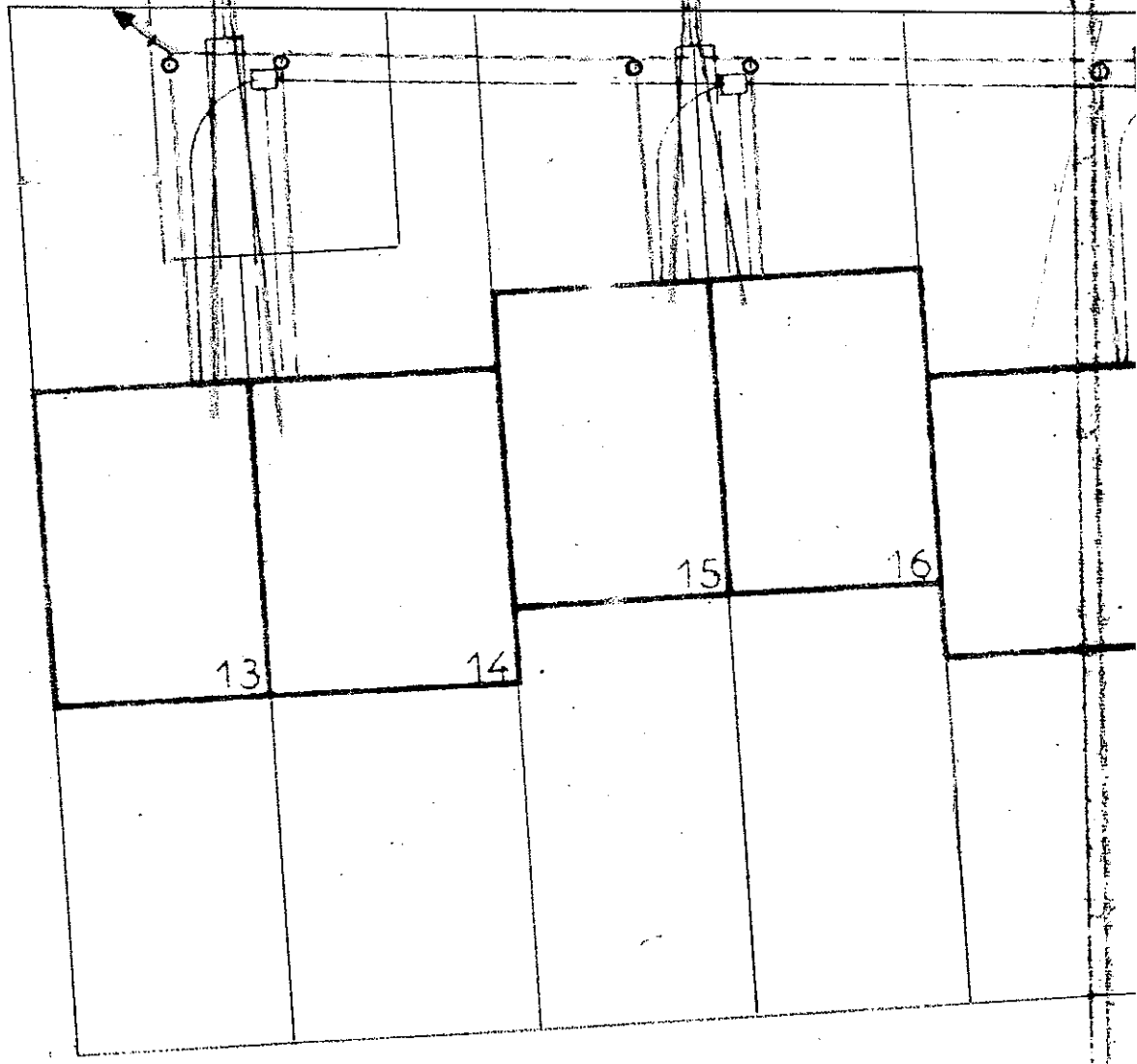
Ventouse

13

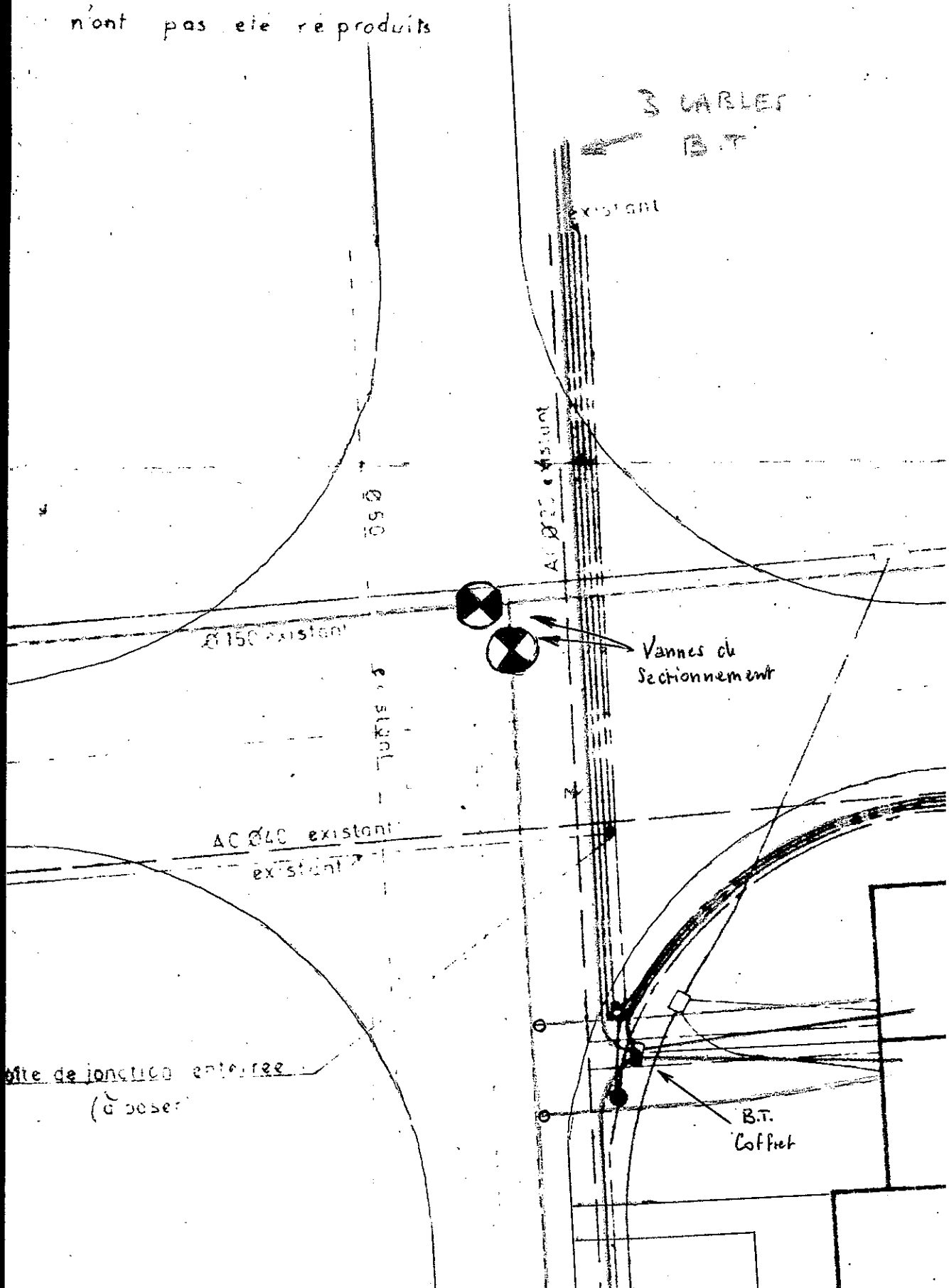
14

15

16



Nota: Les câbles BT & MT  
existants dans le carrefour  
n'ont pas été reproduits



MT  
four  
duits

3 CABLES  
B.T.

EXISTANT

A1025 existant

A2 existant

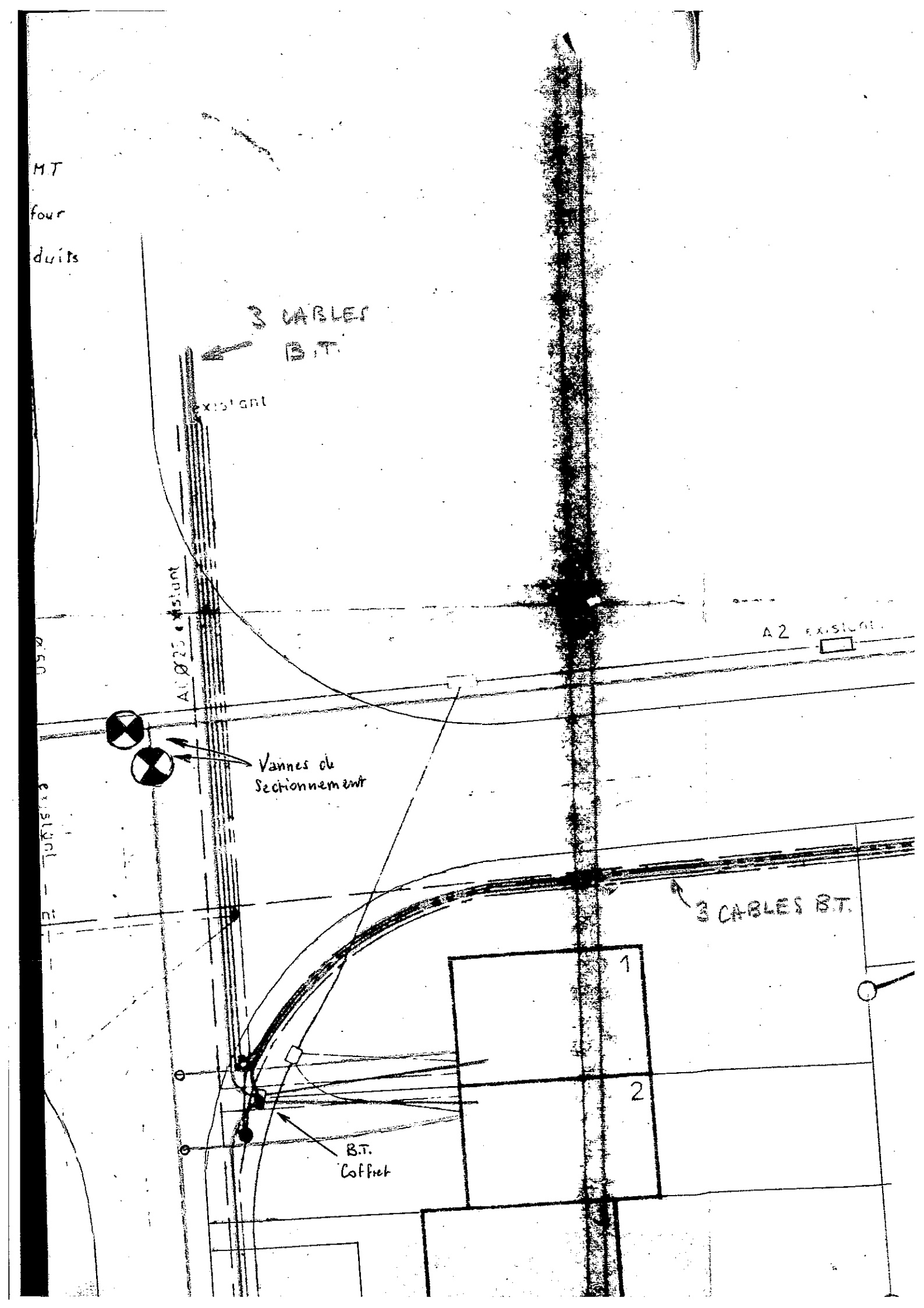
Vannes de  
Sectionnement

3 CABLES B.T.

B.T.  
Coffret

1

2



EXISTANT

A Ø 225



Vannes de Sectionnement

3 CABLES B.T.

B.T. Coffret

B.T. Boite de derivation

B.T. Boite de derivation

A Ø 225 existant

12

B.T.

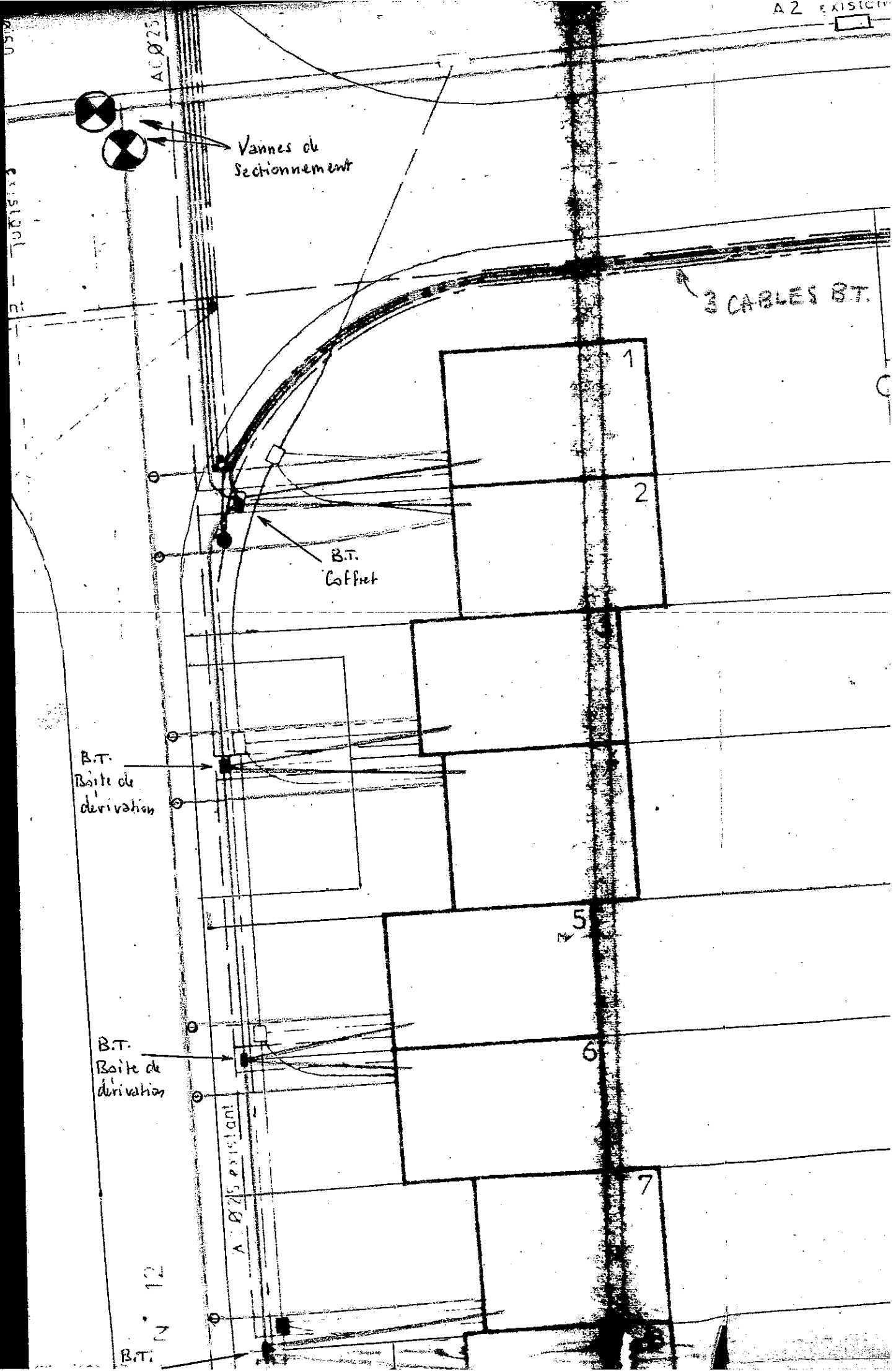
1

2

5

6

7



Boite  
de dérivation

VOIE

B.T.  
Boite de  
dérivation

Vidange

B.T.  
Boite de  
dérivation

9

10

11

12

